



CARESTREAM OmniLink Software Integration Guide

PN AB1064
2013-11-14
Version 1.0

Table of Contents

CARESTREAM OmniLink Software.....	4
Overview	4
Destinations.....	4
Integration Requirements.....	5
Integration Instructions.....	5
Integration Procedures	6
How to Install the OmniLink Software.....	6
How to Start or Run OmniLink Software.....	6
How to Configure CARESTREAM OmniLink RECEIVE Destination	7
Useful Information.....	9
How to Configure CARESTREAM OmniLink SEND Destination	11
Dongle Disposal.....	12

All rights reserved. No part of this manual may be reproduced or copied in any form by any means, graphic, electronic, or mechanical, including photocopying, typing, or information retrieval systems without written permission.

The information contained herein is based on the experience and knowledge relating to the subject matter gained by Carestream Health, Inc. prior to publication.

No patent license is granted by this information.

Carestream Health, Inc. reserves the right to change this information without notice, and makes no warranty, express or implied, with respect to this information. Carestream Health shall not be liable for any loss or damage, including consequential or special damages, resulting from any use of this information, even if loss or damage is caused by Carestream Health's negligence or other fault.

CARESTREAM OmniLink Software

Overview

The CARESTREAM OmniLink Software is image encryption and transmission software that can be integrated with your system to facilitate sending encrypted and compressed data files via TCP/IP over the Internet without using a VPN.

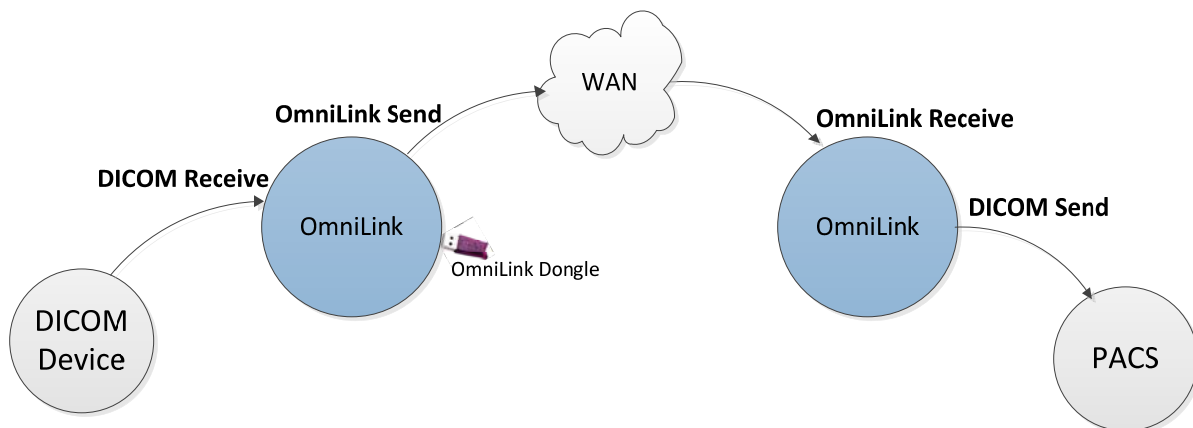
Among the advantages of using the OmniLink Software are the following:

- Simplifies recovery if the Internet connection is dropped; no need to resend all images
- Reconnects and resumes file transfer automatically from the time the connection was broken
- Compresses and encrypts files sent and reprocesses files Received to their original state
- Notifies the Sender and Receiver with a popup message when the image is successfully Received at the destination (option)
- Alerts the Sender with an e-mail message if there are any problems on the receiving end
- Populates the Worklist automatically when data is Received

Destinations

SEND Destination

RECEIVE Destination



- The SEND Destination is the computer which will receive the DICOM files from a 3rd party application, encrypt the files, and send them across a network to the RECEIVE Destination computer.
- The RECEIVE Destination is the computer which will receive the encrypted files, decrypt the files, and send the DICOM files to a 3rd party application, or save the file to a folder.

Integration Requirements

- The facility that acts as the final destination for the images must have the OmniLink Software installed and configured.
- The network must have all required port forwarding set up on the router and the public IP address must be static.
- There must be an open USB port on the primary Sending workstation to plug in the licensed dongle.
- Each Sender must have a unique login ID.
- Wide Area Network (WAN) port forwarding must be configured and may need to be enabled through the WINDOWS firewall.
- The default port forwarding will require ports 8021 and 8022.

Integration Instructions

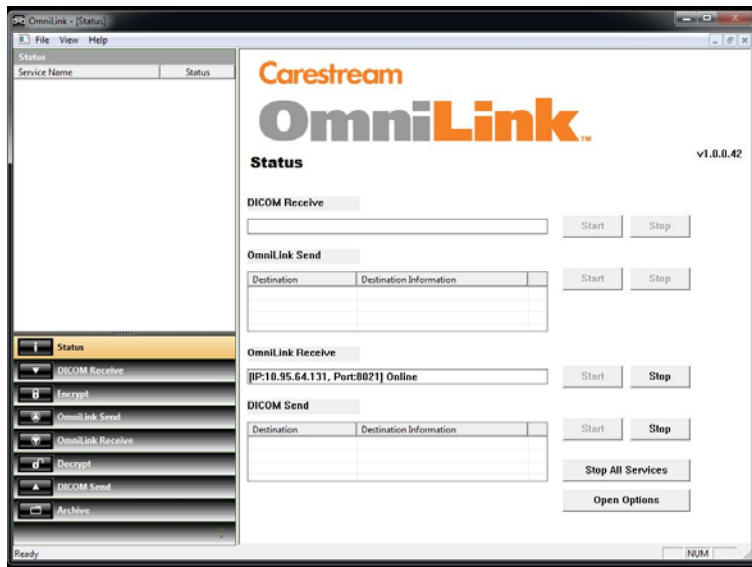
Read through all steps before you begin the integration process. Follow these steps in the exact order they are listed. The CARESTREAM OmniLink Receive must be configured first before setting up the SEND Destination.

Prerequisites:

- Disable the WINDOWS firewall or the 3rd party firewall before installing the OmniLink Software.



The  icon appears on the Taskbar after you download the OmniLink Software. When you click this icon, the **CARESTREAM OmniLink Status** window displays.



Integration Procedures

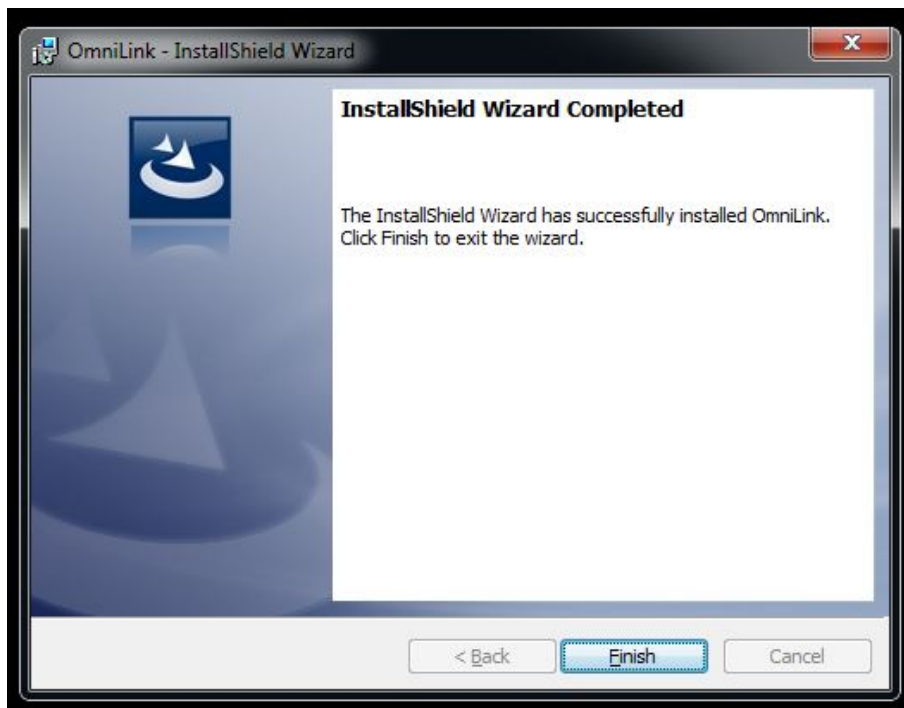
1. Install the OmniLink Software on the RECEIVE destination computer.
2. Configure the OmniLink RECEIVE destination.
3. Install the OmniLink Software on the SEND destination computer.
4. Configure the OMLILINK SEND destination.

How to Install the OmniLink Software

1. Insert the CARESTREAM OmniLink Software CD into the CD/DVD drive on your computer.
2. At the **Welcome** screen, click **Next**.
3. Click **Install** and follow the on-screen instructions displayed on the **InstallShield Wizard**.

NOTE: If a message appears about allowing access, select **Allow Access**.

When the installation is complete, the **InstallShield Wizard Completed** screen appears.



How to Start or Run OmniLink Software


1. Double-click the **OmniLink** icon  on the desktop.
2. Wait for the OmniLink Software to load.

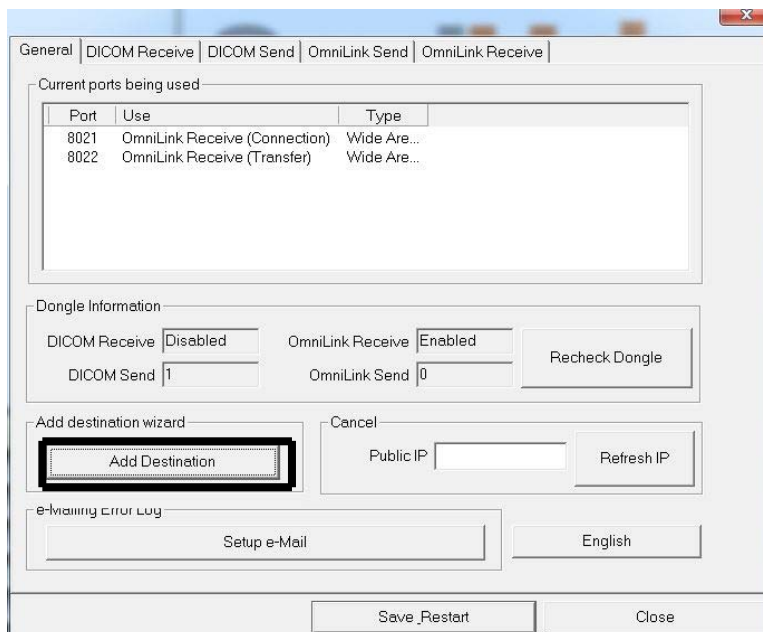
The **CARESTREAM OmniLink Status** window appears.

How to Configure CARESTREAM OmniLink RECEIVE Destination

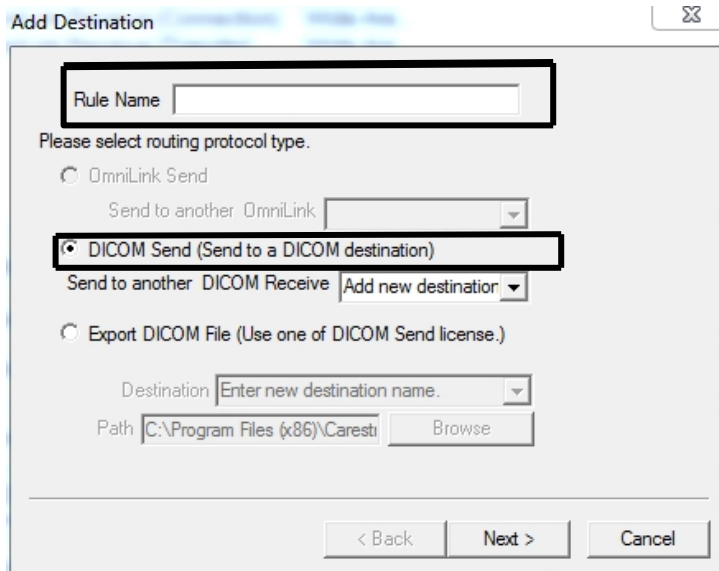
In this section, you will:

- Enter the final destination to send the Received images (DICOM Send) such as PACS or viewing software.
- Enter information for the OmniLink Software where the images are coming from (OmniLink Receive).

1. Double-click the **OmniLink** icon  in the Taskbar to open the software.
2. At the **CARESTREAM OmniLink Status** window, in the lower right corner, select **Open Options**.
3. On the **General** tab, select **Add Destination**.



4. On the **Add Destination** dialog box, enter a **Rule Name**.
Rule Name—The descriptive text for this Rule.



5. Select **DICOM Send (Send to a DICOM destination)**
 6. Click **Next**.
 7. On the next **Add Destination** dialog, enter:
 - Destination
 - AE Title
 - IP Address
 - Port
 8. To verify the information, click **DICOM Ping**.
 - **DICOM Ping**—The authentication between DICOM Send and OmniLink Receive, to ensure that you send the image to the correct location.
 - **Destination**—Use an easily identifiable keyword (such as **office**).
 - **AE Title, IP Address, and Port**—Obtain from the DICOM Server to which the received files are sent.
 9. Click **Next**.
 10. On the next **Add Destination** dialog box, select **Receive from OmniLink Send**.
 11. On the next **Add Destination** dialog box, enter a **Passcode ID** for the OmniLink Receive.
- NOTE: The **Passcode ID** can contain up to 16 letters and/or numbers, such as, ClinicXYZ, or DoctorABC. This is the same password used when configuring the OmniLink SEND Destination system.
12. Click **Finish**.
 13. On the **General** tab, click **Refresh IP** to get the public IP address for the system.
 14. Make a note of the IP address and the OmniLink Receive (Connection) port to use when you are setting up the SEND Destination.

The default transfer port forwarding is 8021 and 8022. If you are receiving from multiple systems running the OmniLink Software, add additional incremental transfer ports with each consecutive port having an incrementally higher number, such as 8023, 8024, and so forth.

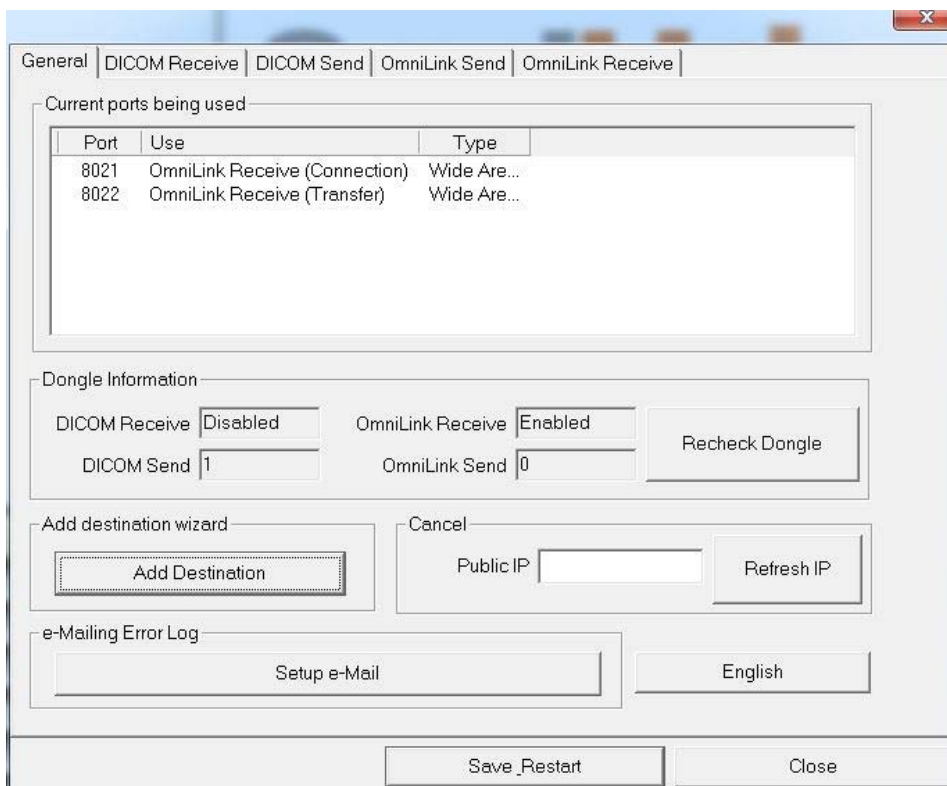
15. Select **Save Restart**.

NOTE: Whenever you make a change in the OmniLink status, you must select **Save Restart**.

The OmniLink RECEIVE Destination configuration is complete.

Useful Information

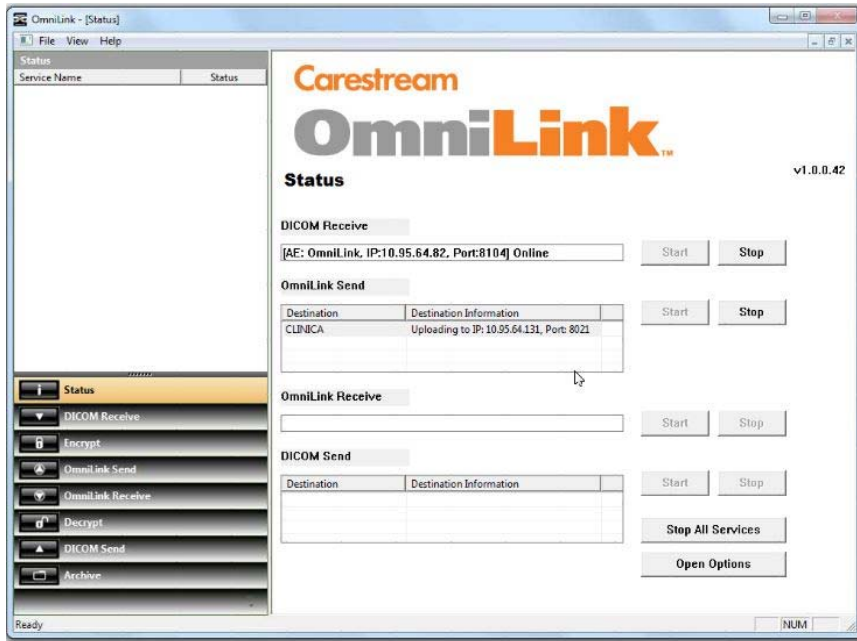
At the main **CARESTREAM OmniLink Options** window, with the **General** tab selected:



- Note the ports that are labeled as Wide Area Network (WAN). WAN ports must be configured on the router for port forwarding to the local IP address for this release of the OmniLink Software.
- Select **Refresh IP** to save the Public IP address of your computer.
- You may need to enable the WAN ports through your WINDOWS firewall. Contact your facility's IT person for assistance with router configuration.

If you need further assistance or have any questions regarding this software, contact Carestream Technical Support.


The following screen displays after a successful OmniLink Send and DICOM Receive configuration.

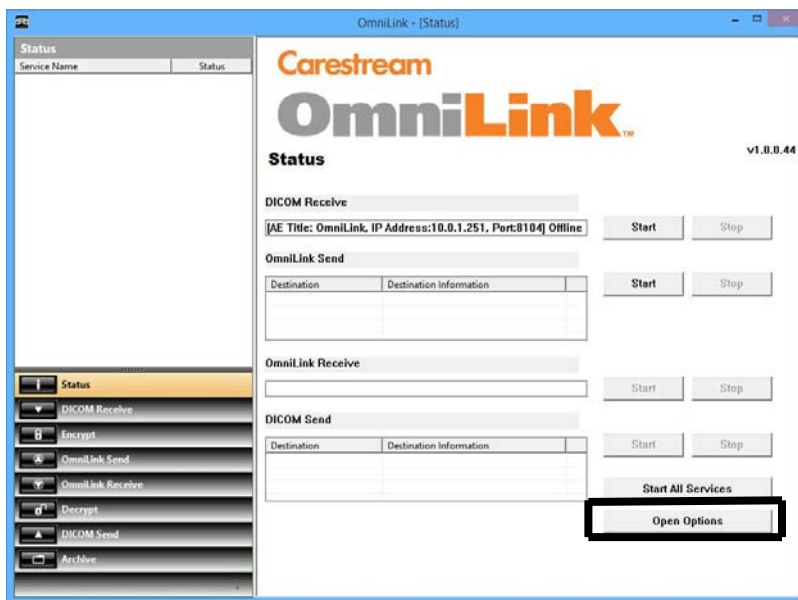


- The **Start** icon is disabled (grayed out) when the OmniLink Software is running. If the **Start** icon is enabled (highlighted), this means that images are not being uploaded. If this happens, click the **Start** icon to run the process. It may be necessary to select **Stop** to change the configuration and set up a new Destination.
- Click the **Minimize** button in the upper right corner of the screen to close the dialog box.

How to Configure CARESTREAM OmniLink SEND Destination

In this section you will:

- Configure the OmniLink Software System where the images will be sent (OmniLink Send).
 - Configure the location from which DICOM images will be coming (DICOM Receive).
1. Insert the OmniLink dongle (a USB flash drive).
 2. Double-click the **OmniLink** icon  in the taskbar.
 3. At the **CARESTREAM OmniLink Status** window, in the lower right corner, select **Open Options**.



4. On the **General** tab, select **Add Destination**.
5. On the **Add Destination** dialog box, enter a **Rule Name**, select **OmniLink Send**, and click **Next**.

Rule Name—The descriptive text for this rule.

6. On the next **Add Destination** dialog box, enter your destination information:

- Destination
- IP address
- Port
- Passcode ID

Destination—An easily identifiable keyword.

IP address, Port, and Passcode ID—Details from the OmniLink RECEIVE Destination System.

7. To verify your information, click **Connection Test**.

The **Connection Test** is an authentication between the OmniLink Send and the OmniLink Receive to ensure that the SEND and RECEIVE Destinations can communicate.

NOTE: If this test fails, check that the OmniLink Receive is not stopped at the OmniLink RECEIVE Destination.

8. Click **Next**.

9. On the next **Add Destination** dialog box, select **Receive from DICOM modality (DICOM SCU)**.

10. Click **Next**.

11. On the next **Add Destination** dialog box, select either the **Default** or **Custom AE-Title of DICOM**. If you select **Custom AE-Title**, type the AE-Title in the text field.

Default—The default OmniLink DICOM AE Title is **OmniLink**.

Custom AE Title—Enter a custom AE Title for this OmniLink system.

12. Click **Finish**.

13. On the **General** tab, click **Save Restart**.

14. Click **OK**.

The OmniLink SEND Destination configuration is complete.

Dongle Disposal



In the European Union, this symbol indicates that when the last user wishes to discard this product, it must be sent to appropriate facilities for recovery and recycling. Contact your local representative or refer to <http://recycle.carestreamhealth.com> for additional information on the collection and recovery programs available for this product.



Carestream Health, Inc.

150 Verona Street

Rochester, NY 14608

United States

CARESTREAM is a trademark of Carestream Health, Inc.

© Carestream Health, Inc. 2013

Printed in the United States